



Images: Jody D'Arcy.

Bold statement that's all class

YABELLA SALISBURY

Combining modernity with a sense of warmth, this bold custom build by Zorzi utilises a wide range of materials to effortlessly create a sleek, beguiling home.

With architecture and interior design by Rietveld Architects, enhanced with furniture and styling by furniture and art curator and stylist Andrew Thornton Hick, the abode boasts a classy hotel-style atmosphere while still remaining an inviting family home.

Zorzi Design Project Manager James Zorzi said concrete, timber, steel and stone formed the basis of the residence's style, with recurring

features of battened timber, polished plaster and aluminium tying the theme together.

"Burnished concrete flooring throughout the ground floor provides a solid base for the built-in and soft furnishings to flourish, while the Black Japan timber flooring to the floating stair treads, as well as the upper-floor casual living and circulation spaces carries this robust mood," he said.

According to Mr Zorzi, the clients required a cutting-edge abode accommodating family and friends, with key areas of consideration including the main kitchen, dining and living area, and its interaction with the alfresco, backyard and pool.

"Vintec wine fridges integrated into the kitchen cabinetry allow for easy access for daily wines and beverages," he said.

"The kitchen continues through to a large open scullery with bench space and overhead cabinetry, as well as full-height integrated cabinetry storage opposite.

"The open-plan zone flows naturally to the alfresco and the backyard, while flush floor-recessed tracks allow for a seamless indoor/outdoor transition.

"Fully retractable hidden flyscreens allow the entire space to be continuously open year-round while providing protection from bugs and dust."

Mr Zorzi said the alfresco was designed to allow for maximum northern light while simultaneously being shielded from the prevailing summer sea breezes.

"The area has distinct zones with the barbecue and the island bar opening to the dining and casual seating space, which boasts a double volume void," he said.

This exterior entertaining zone incorporates a range of high-end materials, including an extendable dining table, comfortable seating, ceiling-mounted heatstrips and fans.

"The mood is kept at the perfect temperature too with a combination of feature surface-mounted lights and downlights," Mr Zorzi said.

"The pool cabana is integrated with the infinity edge pool and features a cantilevered concrete roof.

"You can sit back here and enjoy a summer cocktail, dipping your feet into the water while looking across the elevated pool back towards the alfresco."

Along with two sizeable guest suites on this floor, a kids' playroom spills out to its own private courtyard area.

"The room has been laid out to evolve into a quiet study area or



a TV room in years to come, and also features a built-in robe and a private ensuite to function as a guest bedroom," Mr Zorzi said.

Another essential area the clients wanted close attention paid to was the master suite. Designed to encapsulate the essence of a luxury hotel suite, it encompasses over half of the upper floor.

"A feature 2.75m-high timber pivot door provides the entrance into the retreat lounge area with views

across the double volume alfresco below to the backyard and pool cabana," Mr Zorzi said.

"A vertically battened timber wall conceals the pivot door leading to the walk-in wardrobe and ensuite.

"In the ensuite, concealed skylight windows situated about the floating ceiling create an ambient, warm glow.

"A circular freestanding bath gazes upon the infinity edge pool and backyard below via floor-to-ceiling,



silicone-corner windows, while also retaining privacy."

The minor bedrooms also embrace an opulent escape. Entry to each is via a gallery with floor-to-ceiling cabinetry timber doors containing built-in robes on one side and access to a personal ensuite on the other.

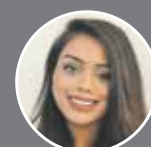
CONTACT
Zorzi, 9382 4880
www.zorzi.com.au

ROSS SQUIRE
M3 x 6

NEW Homes



Louise Allan



Mahwish Ali



Ysabella Salisbury

New Homes Editor Louise Allan
Assistant Editor Shayling Ngo
Content Manager Ysabella Salisbury
ysabella.salisbury@wanews.com.au
Subeditor Natalie Andrews
Cover Photo Custom build by Zorzi

Advertising Manager Maddisen Booth
New Homes Advertising Executive
Mahwish Ali | 9482 3606
mahwish.ali@wanews.com.au
Sales Coordinator
Jackie Calladine | 9482 3119
jackie.calladine@wanews.com.au

Contact us
New Homes
The West Australian
50 Hasler Road, Osborne Park, WA 6017
Email: newhomes@wanews.com.au

For all the latest New Homes news visit: thewest.com.au/lifestyle/new-homes